

# Colorado's MIECHV Program FY 2021

## HRSA's Maternal, Infant, and Early Childhood Home Visiting (MIECHV) Program

supports the [Colorado Home Visiting Program](#) and provides voluntary, evidence-based home visiting programs for expectant and new parents with children through kindergarten entry age living in communities that are at-risk for poor maternal and child health outcomes

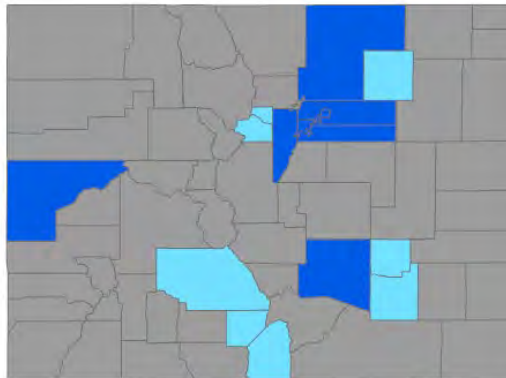
### Colorado MIECHV Program At-a-Glance

#### Rural counties:

Alamosa, Clear Creek, Costilla, Crowley, Gilpin, Morgan, Otero, Saguache

#### Non-rural counties:

Adams, Arapahoe, Denver, Jefferson, Mesa, Pueblo, Weld



**Participants**

**3,539**

**Households**

**1,714**

**Home Visits**

**23,181**

## Colorado Prioritizes Community Needs

MIECHV Program awardees tailor their programs to serve populations of need within their state. In Colorado:

- **69.2%** of households were low income
- **6.0%** of households included a pregnant enrollee under age 21

## Colorado Performance Highlights

MIECHV Program awardees track and report improvements in MIECHV benchmark areas every three years. In the most recent assessment following FY 2020, the Colorado MIECHV program successfully met the requirements for demonstration of improvement by improving in all 6 MIECHV [benchmark areas](#).

Evidence-Based Home Visiting Models in Colorado

[Home Instruction for Parents of Preschool Youngsters \(HIPPY\)](#)

[Nurse-Family Partnership \(NFP\)](#)

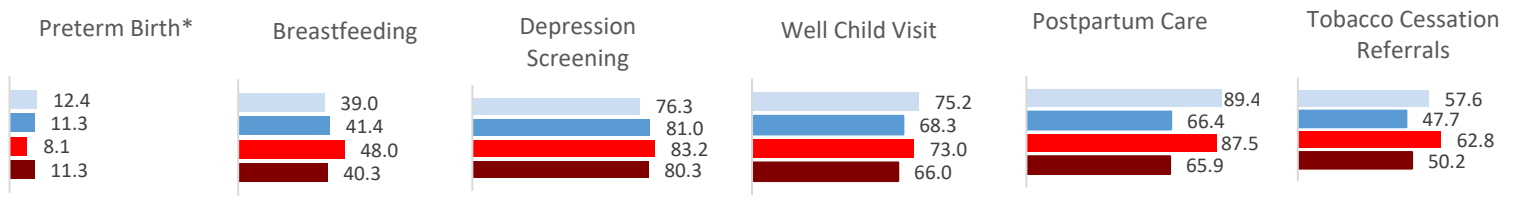
[Parents as Teachers \(PAT\)](#)

### FY 2021 Performance Highlights Include:

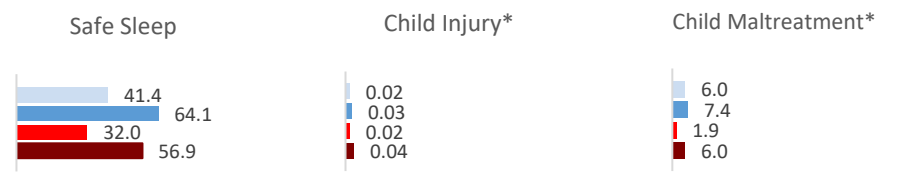
- **Postpartum Care: 89.4% of mothers enrolled in home visiting received a postpartum visit with a healthcare provider within 8 weeks of delivery.** Many maternal deaths occur in the postpartum period and are considered preventable with appropriate follow-up care – the CDC has found that 66 percent of postpartum deaths are preventable.
- **Colorado MIECHV Expansion: In June 2021, Colorado held its five-year site solicitation.** Based on findings in the 2020 needs assessment, applicants could include service in 22 counties (formerly 15). The solicitation resulted in awards to 16 agencies serving 19 counties.

# Colorado MIECHV Performance Measurement Data Compared to MIECHV Averages<sup>1</sup>

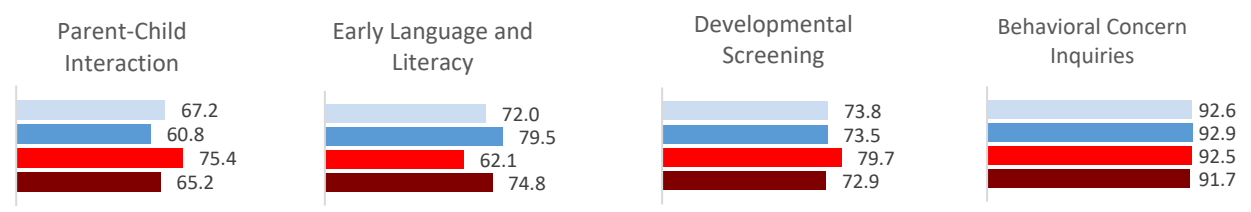
## Benchmark Area 1 – Maternal and Newborn Health Outcomes



## Benchmark Area 2 – Child Injuries, Abuse, Neglect, and Maltreatment and Emergency Department Visits

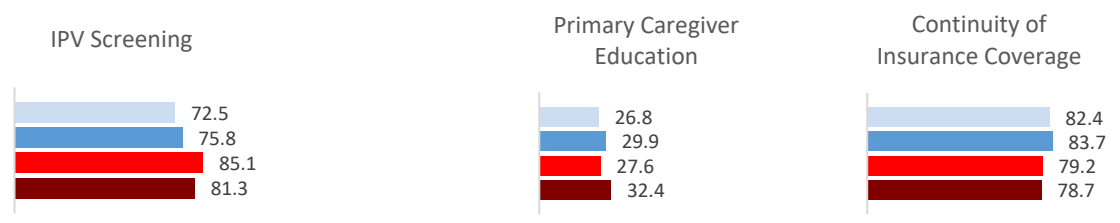


## Benchmark Area 3 – School Readiness and Achievement

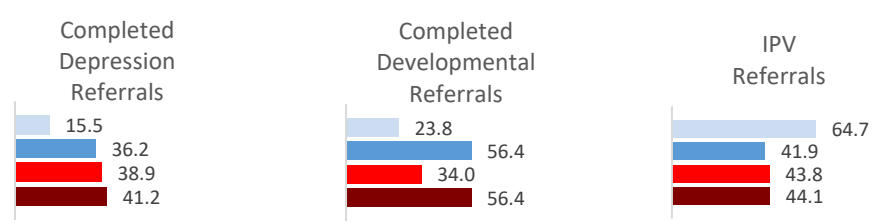


## Benchmark Area 4 – Crime or Domestic Violence

## Benchmark Area 5 – Family Economic Self-Sufficiency



## Benchmark Area 6 – Coordination and Referrals for Other Community Resources and Supports



■ Colorado MIECHV (FY 2021)      ■ Colorado MIECHV Rolling Average (FY 2018- FY 2020)  
■ MIECHV National Average (FY 2021)      ■ MIECHV National Rolling Average (FY 2018- FY 2020)

<sup>1</sup> Comparison to a three-year average minimizes the effects of outliers or potential data reporting issues specific to one year.  
 \* Direction for improvement in performance is downwards.