

Hawaii MIECHV Program FY 2022

HRSA's Maternal, Infant, and Early Childhood Home Visiting (MIECHV) Program

supports the [Hawaii Home Visiting Program](#) and provides voluntary, evidence-based home visiting programs for expectant and new parents with children through kindergarten entry age living in communities that are at-risk for poor maternal and child health outcomes¹.

Hawaii MIECHV Program At-a-Glance

Rural counties by Funding

Source:

- MIECHV: Hawaii, Kauai

Non-rural counties by Funding

Source:

- MIECHV: Honolulu, Maui



Participants

1,168

Households

567

Home Visits

8,216

Hawaii Prioritizes Community Needs

MIECHV Program awardees tailor their programs to serve populations of need within their state. In Hawaii:

- **56.5%** of households were at or below 100% of the Federal Poverty Guidelines
- **4.8%** of households included a pregnant enrollee under age 21

Hawaii Performance Highlights

MIECHV Program awardees track and report improvements in MIECHV benchmark areas every year. Awardees are required by authorizing statute to demonstrate improvement in benchmark areas every three years. In the most recent assessment following FY 2020, the Hawaii MIECHV program successfully met the requirements for demonstration of improvement by improving in all 6 MIECHV [benchmark areas](#).

FY 2022 Performance Highlights Include:

- **Early Language and Literacy Activities: 97.8%** of children enrolled in home visiting had a family member who read, told stories, and/or sang with them on a daily basis. Children who are spoken to frequently by their caregivers have larger vocabularies and literacy skills, which are linked to later academic, social, and cognitive functioning.
- **Safe Sleep: 86.6%** of infants enrolled in home visiting were always placed to sleep on their backs, without bed-sharing or soft bedding. Following recommended infant safe sleep practices can reduce the risk of sudden infant death syndrome (SIDS) and other sleep-related infant deaths.

Evidence-Based Home Visiting Models in Hawaii

[Healthy Families America \(HFA\)](#)

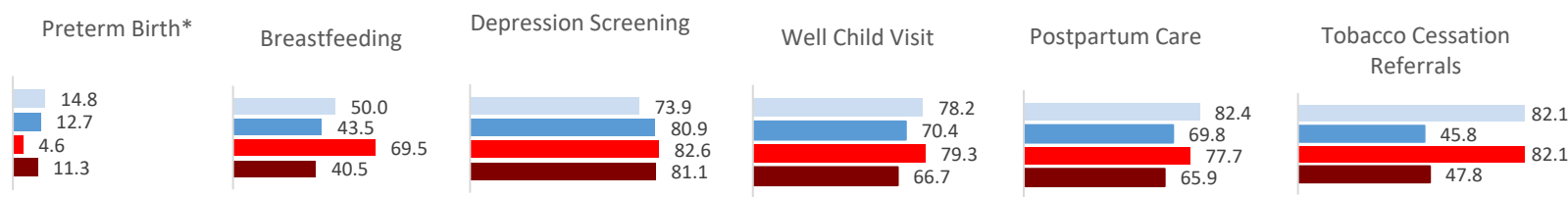
[Home Instruction for Parents of Preschool Youngsters \(HIPPY\)](#)

[Parents as Teachers \(PAT\)](#)

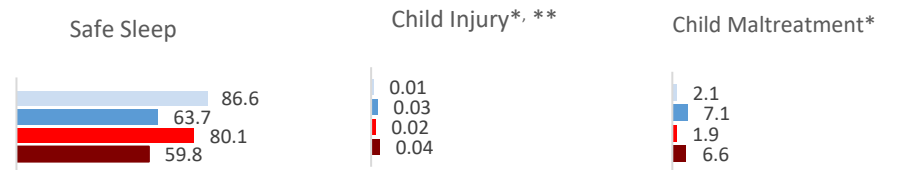
¹ HRSA awarded ARP [American Rescue Plan Act](#) funds to current MIECHV awardees to address the needs of families in response to the COVID-19 pandemic.

Hawaii MIECHV Performance Measurement Data Compared to MIECHV Averages²

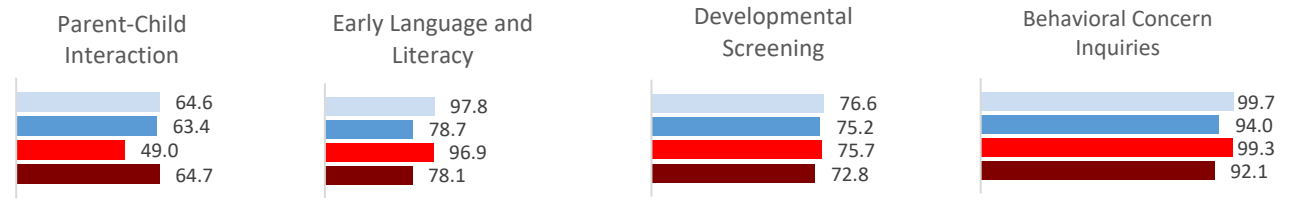
Benchmark Area 1 – Maternal and Newborn Health Outcomes



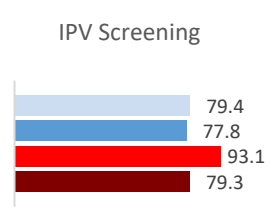
Benchmark Area 2 – Child Injuries, Abuse, Neglect, and Maltreatment and Emergency Department Visits



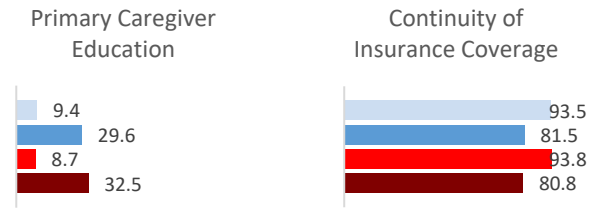
Benchmark Area 3 – School Readiness and Achievement



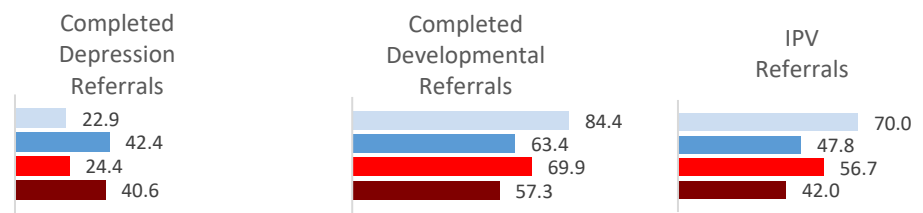
Benchmark Area 4 – Crime or Domestic Violence



Benchmark Area 5 – Family Economic Self-Sufficiency



Benchmark Area 6 – Coordination and Referrals for Other Community Resources and Supports



■ Hawaii MIECHV (FY 2022) ■ Hawaii MIECHV Rolling Average (FY 2019- FY 2021)
■ MIECHV National Average (FY 2022) ■ MIECHV National Rolling Average (FY 2019- FY 2021)

² Comparison to a three-year average minimizes the effects of outliers or potential data reporting issues specific to one year.
 * Direction for improvement in performance is downwards. **Child Injury reported as a rate