

# Idaho MIECHV Program FY 2022

## HRSA's Maternal, Infant, and Early Childhood Home Visiting (MIECHV) Program

supports the [Idaho Home Visiting Program](#) and provides voluntary, evidence-based home visiting programs for expectant and new parents with children through kindergarten entry age living in communities that are at-risk for poor maternal and child health outcomes<sup>1</sup>.

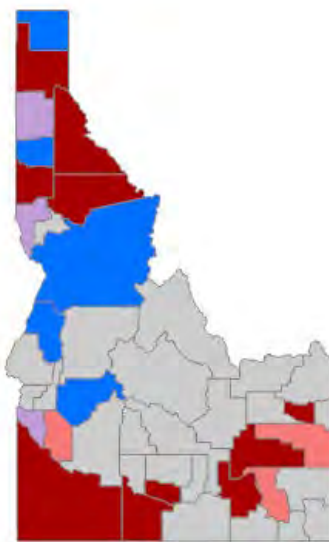
### Idaho MIECHV Program At-a-Glance

#### Rural counties by Funding Source:

- MIECHV: Bingham, Bonner, Clearwater, Jerome, Latah, Madison, Owyhee, Power, Shoshone, Twin Falls
- ARP<sup>1</sup>: Adams, Benewah, Boise, Boundary, Idaho

#### Non-rural counties by Funding Source:

- MIECHV: Ada, Bannock, Bonneville
- Both ARP & MIECHV: Kootenai, Canyon, Nez Perce,



**Participants**  
**1,167**

**Households**  
**555**

**Home Visits**  
**5,260**

### Idaho Prioritizes Community Needs

MIECHV Program awardees tailor their programs to serve populations of need within their state. In Idaho:

- **56.6%** of households were at or below 100% of the Federal Poverty Guidelines
- **6.1%** of households included a pregnant enrollee under age 21

### Idaho Performance Highlights

MIECHV Program awardees track and report improvements in MIECHV benchmark areas every year. Awardees are required by authorizing statute to demonstrate improvement in benchmark areas every three years. In the most recent assessment following FY 2020, the Idaho MIECHV program successfully met the requirements for demonstration of improvement by improving in all 6 MIECHV [benchmark areas](#).

#### FY 2022 Performance Highlights Include:

- **Developmental Screening:** 93.3% of children enrolled in home visiting had a timely screening for developmental delays. Early identification, referral to necessary supports and services, and follow-up has been shown to improve the developmental trajectories of children with developmental delays or disability.
- **Infant Mental Health (IMH) Training:** Idaho MIECHV Partnered with AIM Early Idaho and Reflective Practice Services, LLC to provide virtual training and support for home visitors to strengthen skills in early relational health and work toward an IMH Endorsement credential (IMH-E®).

Evidence-Based  
Home Visiting  
Models in Idaho

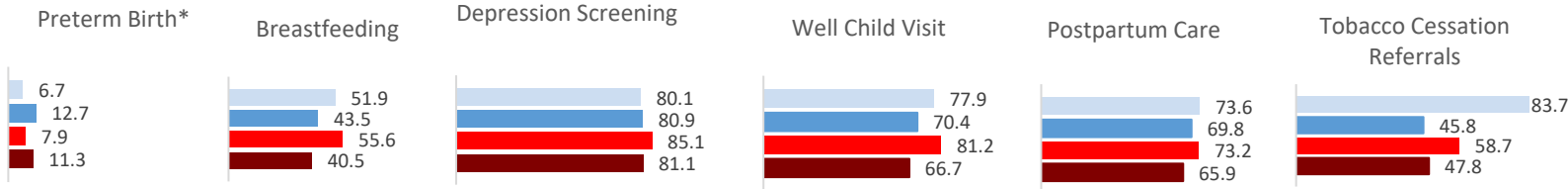
[Nurse-Family  
Partnership \(NFP\)](#)

[Parents as  
Teachers \(PAT\)](#)

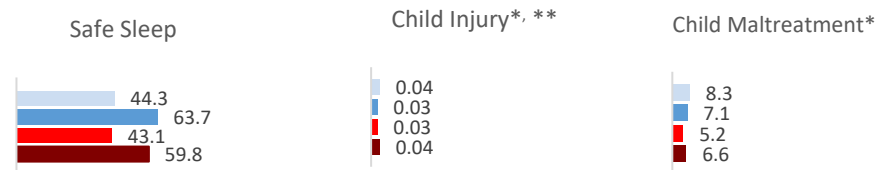
<sup>1</sup> HRSA awarded ARP ([American Rescue Plan Act](#)) funds to current MIECHV awardees to address the needs of families in response to the COVID-19 pandemic.

# Idaho MIECHV Performance Measurement Data Compared to MIECHV Averages<sup>2</sup>

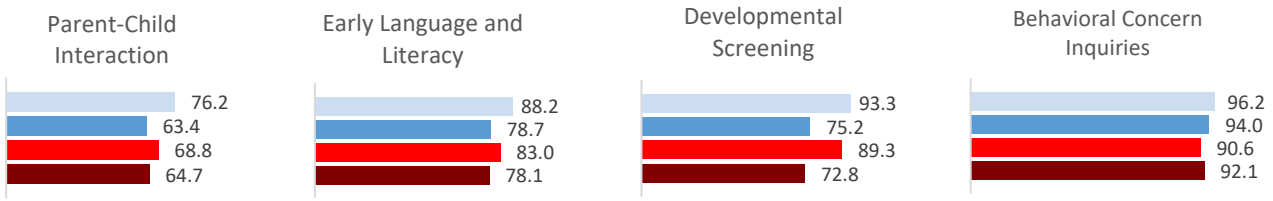
## Benchmark Area 1 – Maternal and Newborn Health Outcomes



## Benchmark Area 2 – Child Injuries, Abuse, Neglect, and Maltreatment and Emergency Department Visits

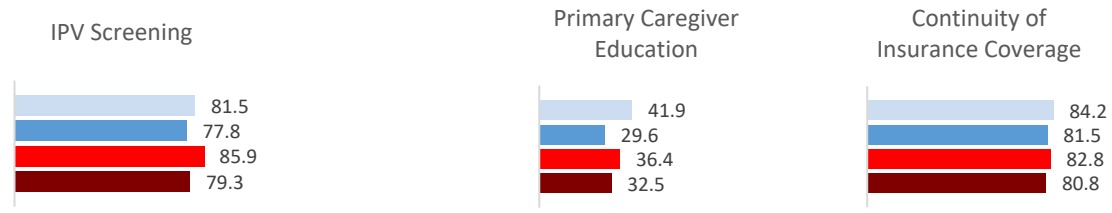


## Benchmark Area 3 – School Readiness and Achievement

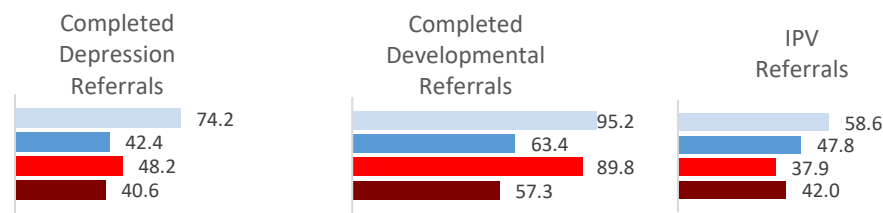


## Benchmark Area 4 – Crime or Domestic Violence

## Benchmark Area 5 – Family Economic Self-Sufficiency



## Benchmark Area 6 – Coordination and Referrals for Other Community Resources and Supports



■ Idaho MIECHV (FY 2022)      ■ Idaho MIECHV Rolling Average (FY 2019- FY 2021)  
■ MIECHV National Average (FY 2022)      ■ MIECHV National Rolling Average (FY 2019- FY 2021)

<sup>2</sup> Comparison to a three-year average minimizes the effects of outliers or potential data reporting issues specific to one year.  
 \* Direction for improvement in performance is downwards. \*\*Child Injury reported as a rate