

Michigan MIECHV Program FY 2022


HRSA's Maternal, Infant, and Early Childhood Home Visiting (MIECHV) Program


supports the [Michigan Home Visiting Program](#) and provides voluntary, evidence-based home visiting programs for expectant and new parents with children through kindergarten entry age living in communities that are at-risk for poor maternal and child health outcomes¹.

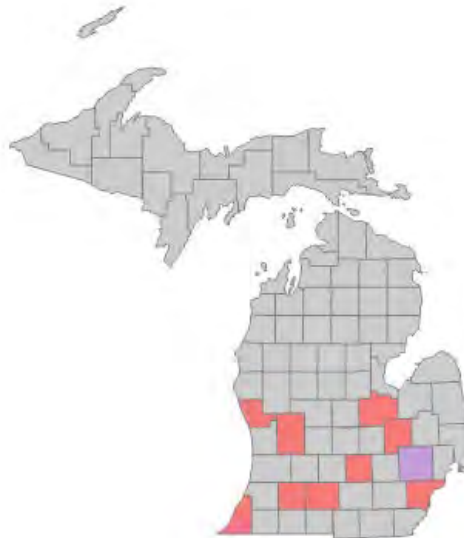
Michigan MIECHV Program At-a-Glance

Non-rural counties by

Funding Source:

 MIECHV: Berrien, Calhoun, Genesee, Ingham, Kalamazoo, Kent, Muskegon, Saginaw, Wayne

 Both ARP¹ & MIECHV: Oakland



Participants

2,825

Households

1,556

Home Visits

16,984

Michigan Prioritizes Community Needs

MIECHV Program awardees tailor their programs to serve populations of need within their state. In Michigan:

- **72.8%** of households were at or below 100% of the Federal Poverty Guidelines
- **18.1%** of households included a pregnant enrollee under age 21

Michigan Performance Highlights

MIECHV Program awardees track and report improvements in MIECHV benchmark areas every year. Awardees are required by authorizing statute to demonstrate improvement in benchmark areas every three years. In the most recent assessment following FY 2020, the Michigan MIECHV program successfully met the requirements for demonstration of improvement by improving in all 6 MIECHV [benchmark areas](#).

FY 2022 Performance Highlights Include:

- **Depression Screening:** **84.9%** of caregivers enrolled in home visiting were screened for depression within 3 months of enrollment or within 3 months of delivery. Research shows that postpartum depression can be associated with a number of adverse outcomes for both the mother and infant, such as poor parent-child bonding, negative parenting approaches, and increased risk of developmental, health, and safety concerns for the child.
- **Peer Navigators:** Michigan MIECHV developed Peer Navigator positions, for people with lived experience placed within community and medical settings, to engage with pre-natal and post-partum families impacted by substance use, connecting them to resources including home visiting, and completing Plans of Safe Care

Evidence-Based Home Visiting Models in Michigan

[Nurse-Family Partnership \(NFP\)](#)

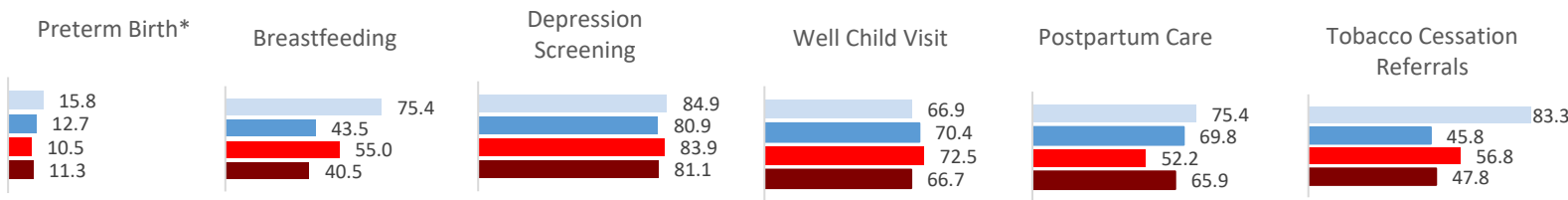
[Early Head Start-Home-Based Options](#)

[Healthy Families America \(HFA\)](#)

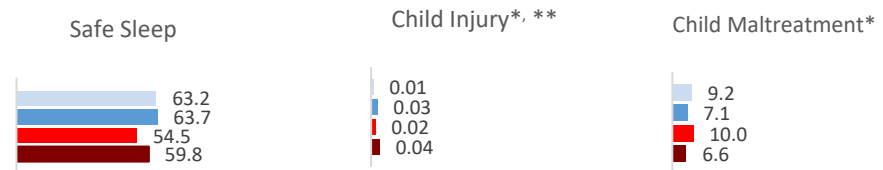
¹ HRSA awarded ARP ([American Rescue Plan Act](#)) funds to current MIECHV awardees to address the needs of families in response to the COVID-19 pandemic.

Michigan MIECHV Performance Measurement Data Compared to MIECHV Averages²

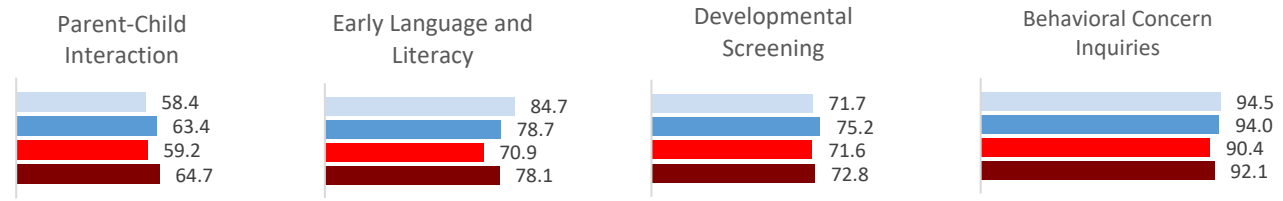
Benchmark Area 1 – Maternal and Newborn Health Outcomes



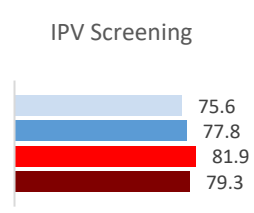
Benchmark Area 2 – Child Injuries, Abuse, Neglect, and Maltreatment and Emergency Department Visits



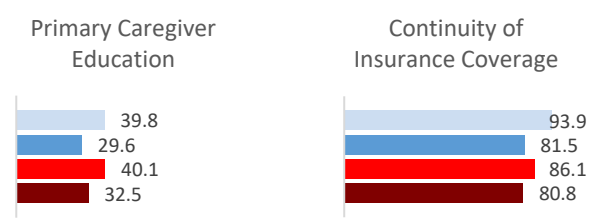
Benchmark Area 3 – School Readiness and Achievement



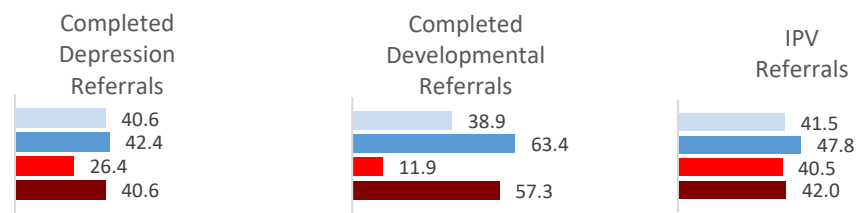
Benchmark Area 4 – Crime or Domestic Violence



Benchmark Area 5 – Family Economic Self-Sufficiency



Benchmark Area 6 – Coordination and Referrals for Other Community Resources and Supports



Michigan MIECHV (FY 2022)
 Michigan MIECHV Rolling Average (FY 2019- FY 2021)

 MIECHV National Average (FY 2022)
 MIECHV National Rolling Average (FY 2019- FY 2021)

² Comparison to a three-year average minimizes the effects of outliers or potential data reporting issues specific to one year.
 * Direction for improvement in performance is downwards. **Child Injury reported as a rate