

Utah MIECHV Program FY 2022

HRSA's Maternal, Infant, and Early Childhood Home Visiting (MIECHV) Program

supports the [Utah Home Visiting Program](#) and provides voluntary, evidence-based home visiting programs for expectant and new parents with children through kindergarten entry age living in communities that are at-risk for poor maternal and child health outcomes¹.

Utah MIECHV Program At-a-Glance

Rural counties by Funding Source:

Source:

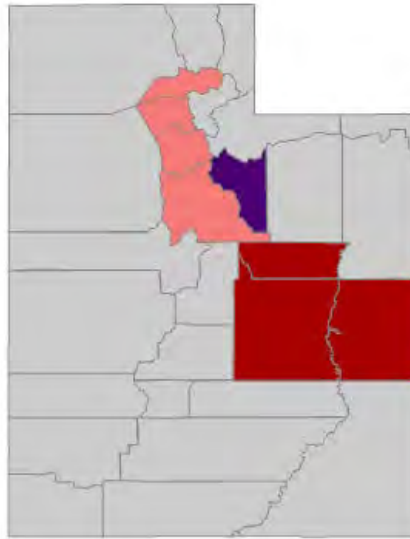
■ MIECHV: Carbon, Emery, Grand

■ Both ARP¹ & MIECHV: Wasatch

Non-rural counties by Funding Source:

Source:

■ MIECHV: Davis, Salt Lake, Utah, Weber



Participants

1,300

Households

581

Home Visits

8,747

Utah Prioritizes Community Needs

MIECHV Program awardees tailor their programs to serve populations of need within their state. In Utah:

- **57.7%** of households were at or below 100% of the Federal Poverty Guidelines
- **1.2%** of households included a pregnant enrollee under age 21

Utah Performance Highlights

MIECHV Program awardees track and report improvements in MIECHV benchmark areas every year. Awardees are required by authorizing statute to demonstrate improvement in benchmark areas every three years. In the most recent assessment following FY 2020, the Utah MIECHV program successfully met the requirements for demonstration of improvement by improving in all 6 MIECHV [benchmark areas](#).

Evidence-Based Home Visiting Models in Utah

[Parents as Teachers \(PAT\)](#)

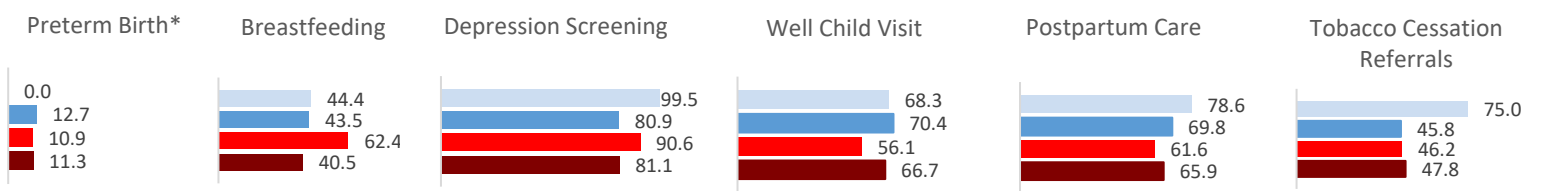
FY 2022 Performance Highlights Include:

- **Depression Screening:** 99.5% of caregivers enrolled in home visiting were screened for depression within 3 months of enrollment or within 3 months of delivery. Research shows that postpartum depression can be associated with a number of adverse outcomes for both the mother and infant, such as poor parent-child bonding, negative parenting approaches, and increased risk of developmental, health, and safety concerns for the child.
- **Early Childhood Infrastructure:** Utah's Home Visiting Program is now housed in the Office of Early Childhood within the Utah Department of Health and Human Services, enabling Utah to better coordinate services and outcomes for families with young children.

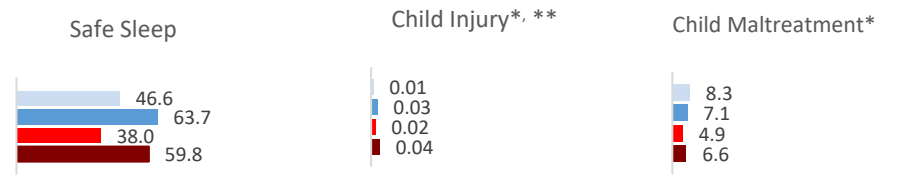
¹ HRSA awarded ARP ([American Rescue Plan Act](#)) funds to current MIECHV awardees to address the needs of families in response to the COVID-19 pandemic.

Utah MIECHV Performance Measurement Data Compared to MIECHV Averages²

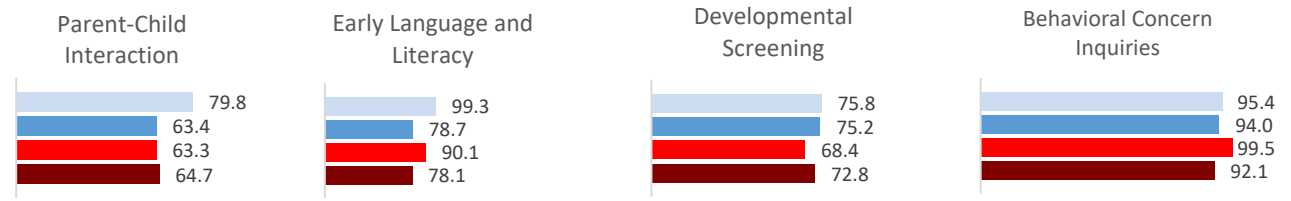
Benchmark Area 1 – Maternal and Newborn Health Outcomes



Benchmark Area 2 – Child Injuries, Abuse, Neglect, and Maltreatment and Emergency Department Visits

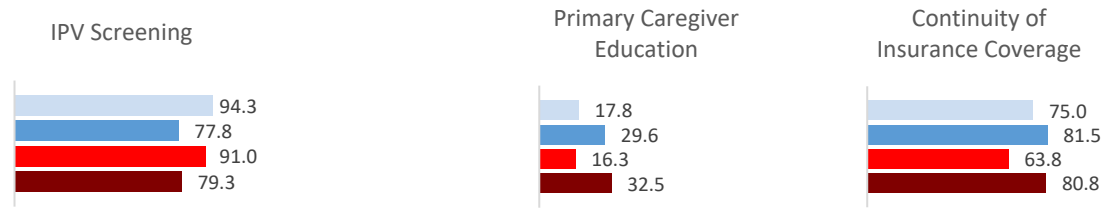


Benchmark Area 3 – School Readiness and Achievement

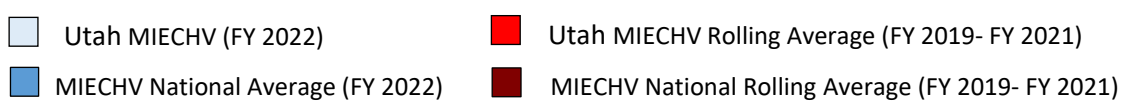
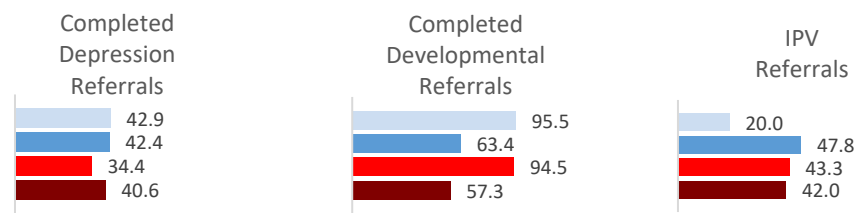


Benchmark Area 4 – Crime or Domestic Violence

Benchmark Area 5 – Family Economic Self-Sufficiency



Benchmark Area 6 – Coordination and Referrals for Other Community Resources and Supports



² Comparison to a three-year average minimizes the effects of outliers or potential data reporting issues specific to one year.
 * Direction for improvement in performance is downwards. **Child Injury reported as a rate