

HRSA MCHB 21st Century Cures Act Programs

Providing Access to Behavioral Health Care for Pediatric & Maternal Populations

Launched in 2018, these programs are supporting behavioral health integration in primary care and maternal health through new and expanding telehealth access programs—including screening, providing clinical behavioral health consultation, care coordination support, and training—with a focus on rural and underserved areas.

★ New □ Expansion

Pediatric Mental Health Care Access (PMHCA) Program

Promotes behavioral health integration in pediatric primary care by supporting the development of new—or the improvement of existing—statewide or regional pediatric mental health care telehealth access programs

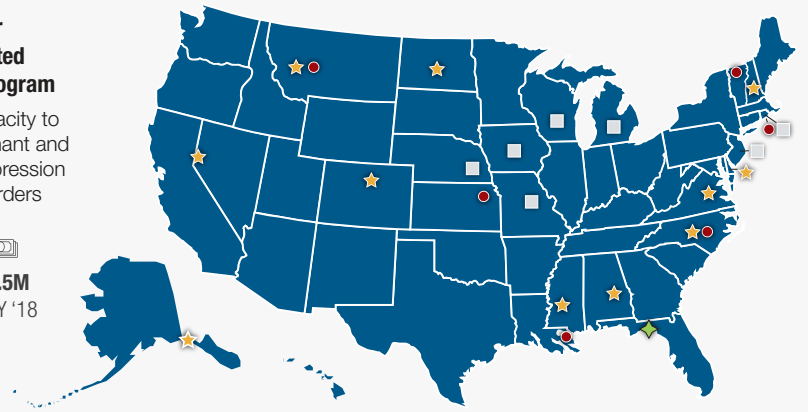
18 Cooperative agreements
5 Years
\$445K per year
\$7.9M in FY '18

● New ◆ Expansion

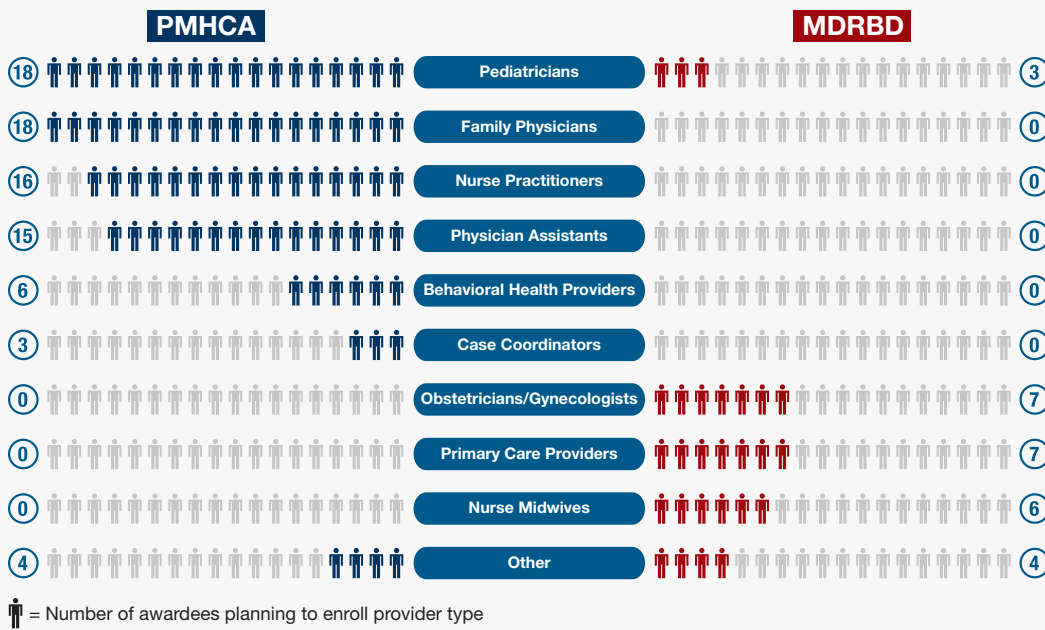
Screening and Treatment for Maternal Depression and Related Behavioral Disorders (MDRBD) Program

Expands health care providers' capacity to screen, assess, treat, and refer pregnant and postpartum women for maternal depression and related behavioral health disorders

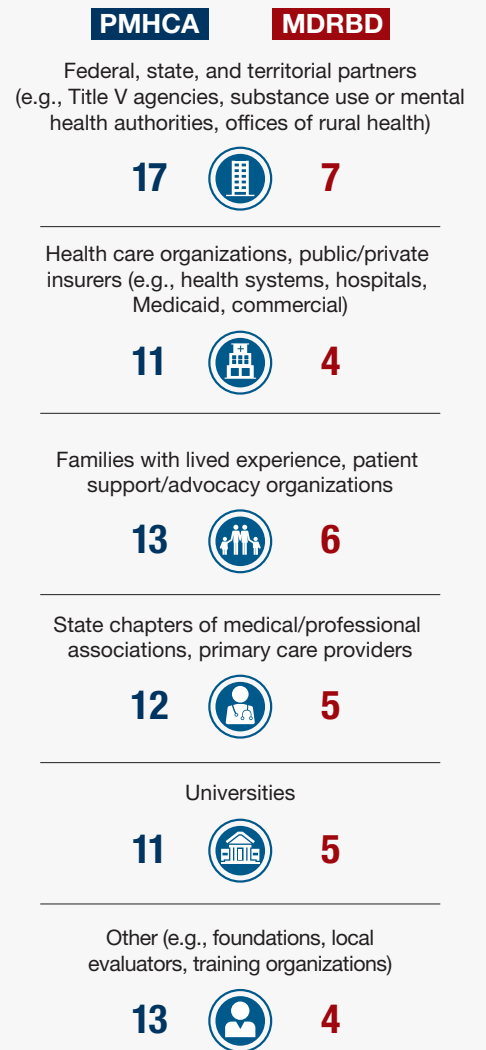
7 Cooperative agreements
5 Years
\$650K per year
\$4.5M in FY '18



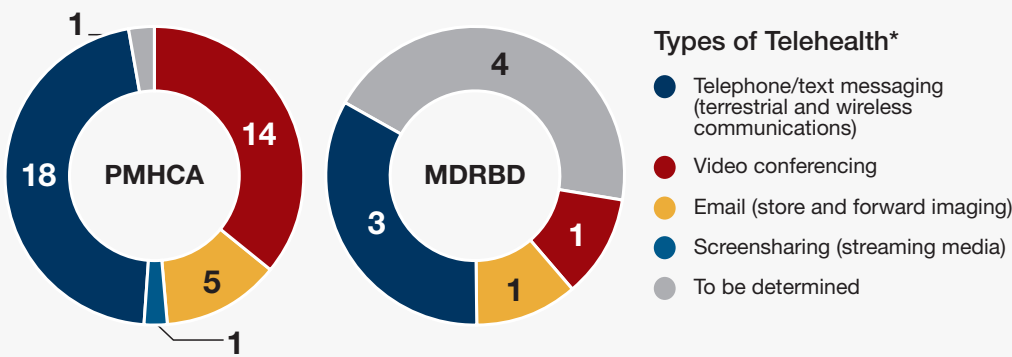
Health Care Providers Targeted for Enrollment



Community Partners Dedicated to Behavioral Health Integration in Primary Care and Maternal Health



How Programs Plan to Expand Access to Care in Rural and Underserved Areas With Telehealth Technologies



*Values add to more than total number of awardees because they plan to use more than one type of telehealth.

Looking Ahead: Goals for the Future



Among pediatric primary care providers caring for children and adolescents with, or at risk of, behavioral health disorders

Increase

- Networks of pediatric mental health teams through telehealth consultation and referral
- Trainings and technical assistance on early identification, diagnosis, and treatment
- Information distributed via telehealth methods on timely detection, assessment, treatment, and referral
- Access to treatment and recovery support in rural and medically underserved areas



Among pregnant and postpartum women with, or at risk of, depression and related behavioral health disorders

Increase

- Universal screening
- Timely detection, assessment, treatment, and referral
- Access to treatment and recovery support in rural and medically underserved areas