

5 Easy Steps to Engage in Your MCH Training Network



The [Division of Maternal & Child Health Workforce Development](#), part of the Health Resources and Services Administration's (HRSA) Maternal and Child Health Bureau (MCHB), supports education and training for the current and future Maternal and Child Health (MCH) workforce. Over 100 MCH Training Programs nationwide work to ensure that health professionals are trained in the unique needs of MCH populations.

Who is part of the MCH Training Program network?

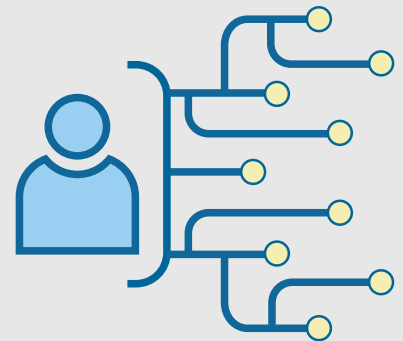
2,000+ future MCH professionals and leaders are trained each year through [MCHB-funded training programs](#). Trainees represent 20+ disciplines, including medicine, nutrition, psychology and public health. As an MCH Trainee, you are part of this national network of MCH professionals.

Why should trainees engage in the MCH Training Program network?

Expand your network of MCH professionals around the country, who have incredible clinical, academic, public health and policy expertise that will shape the future of MCH.

Gain exposure to national-level MCH initiatives, with opportunities for leadership development, mentorship, and connection to MCH faculty and trainees who are advancing exemplary practice and leadership.

Access a national platform to share your MCH research, expertise, and goals to advance the field of MCH.



What are ways trainees can engage with and maximize the MCH Training Program network?

First... join the [MCH Trainee Listserv](#) to connect directly with DMCHWD and current and former MCH Trainees nationwide, and gain access to current research, meetings, and events pertaining to MCH Trainees.

Second... learn what it means to be an MCH Trainee using the [Trainee Toolkit](#), which has online links to comprehensive, easy-to-use web pages; downloadable resources to orient you to MCH Training Program opportunities; and a list of frequently used acronyms relevant to trainees.

Third... visit the [MCH Navigator](#) for more ways to engage in new learning opportunities and to connect with fellow trainees and colleagues in the MCH community.

Fourth... explore and consider applying to join the [Trainee Ambassador Group \(TAG\)](#) to foster connections with other trainees across the MCH Training Program, enhance leadership development, and strengthen links with MCHB.

Fifth... participate in an interactive career development and networking opportunity by applying to attend [Making Lifelong Connections](#).

Steps to Maximize Your Network

